



Seven million Australians live outside major cities in regional, rural & remote communities.

How can we improve

MENTAL HEALTH SERVICES in regional, rural & remote Australia?

The Australian Greens believe that access to quality health care, including mental health care, is a basic human right.

With 20% of Australians experiencing mental health issues in any given year, mental health policy goes to the heart of our nation's wellbeing and touches us all.



The more remote the community, the poorer the health status of its people & the less access they have to health services and health promoting infrastructure

Every year, mental illness in men aged between 12 - 25 costs the Australian economy

\$3.27 billion

The Greens would like to see people living in rural and remote Australia achieve health outcomes equal to those of their urban counterparts by 2020.

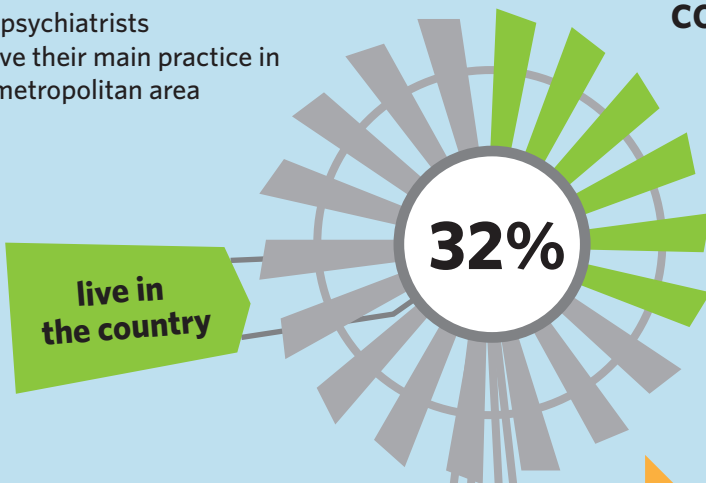
To achieve this we are advocating for:

- 1 Increased & more targeted investment
- 2 A whole-of-person approach
- 3 Better support
- 4 Development of a rural & regional mental health workforce plan
- 5 Greater investment in training & education



91%

of psychiatrists have their main practice in a metropolitan area



9%

of psychiatrists have their main practice in a rural area



pennywright.com.au

Printed and Authorised by Senator Penny Wright, Parliament House, Canberra ACT 2600.